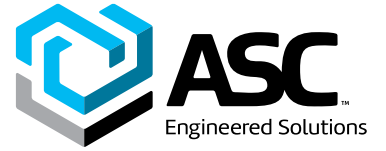


Building connections that last™



GO QVA

Gear Operators Datasheet



Gear Operators GO QVA



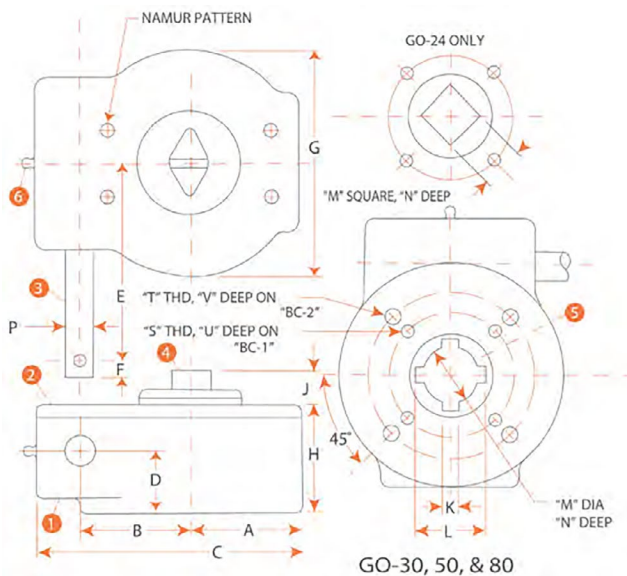
Worm Gear Operators
Series GO-24, GO-30,
GO-50, GO-80

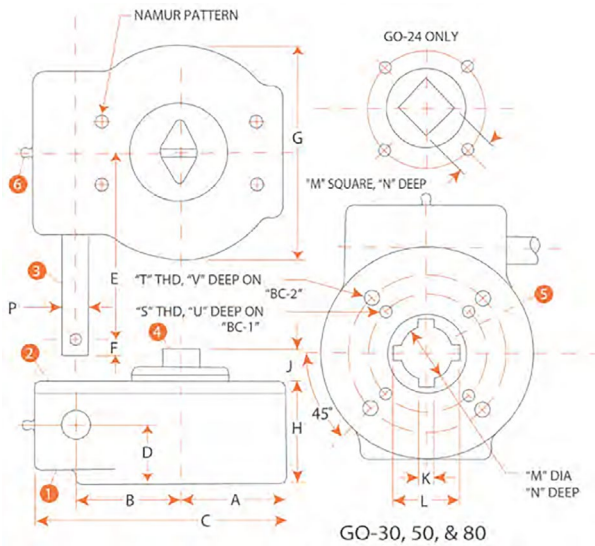
Features

- Worm Gear Operators with Torque Output from 1,000 to 18,000 In-Lbs.
- ISO Mounting Patterns on all Sizes
- Output Torque Ratings based on 80 Lbs. of Rim Pull per MSS & API Standards
- Sealed Weathertight Housings
- Unique External Lube Fitting and Built-In Grease Relief Valve
- Epoxy Coated Housings
- Standard NAMUR Pattern for Limit Switch Mounting
- Designed to insure that Over-Torque Failure Point is Handwheel Pin, assuring External Failure
- Multiple Drive Inserts Available. See Page 6.
- Temperature range 0°F to 160°F

Materials of Construction

Part	Qty,	Description	Standard Material
1	1	Body	Cast Iron
2	1	Cover	Cast Iron
3	1	Input Shaft	1045 Steel
4	1	Position Indicator	Cast Iron
5	1	Output Shaft	Ductile Iron
6	1	Grease Fitting	Plated Carbon Steel
Not Shown	4	Cover Bolts	Plated Carbon Steel
Not Shown	2	Limit Stop Screws	Alloy Steel





Dimensions

Unit	A	B	C	D	E	F	G	H	J	K	L
GO-24-11MM	2.13	1.77	5.04	1.50	5.67	0.76	4.25	2.52	0.87	N/A	N/A
GO-24-14MM	2.13	1.77	5.04	1.50	5.67	0.76	4.25	2.52	0.87	N/A	N/A
GO-30	3.03	2.48	6.93	1.75	5.40	1.50	6.06	2.95	0.87	.190/.193	1.44
GO-50	3.15	3.07	7.48	1.75	5.80	1.50	6.3	2.95	0.87	.375/.377	2.30
GO-80	3.94	4.72	10.24	2.17	7.70	1.50	9.85	3.86	1.50	.500/.502	2.71

Unit	M	N	P DIA	S	T	U	V	BC-1	BC-2	ISO #1	ISO #2	Thru Hole
GO-24-11MM	11MM	2.40	0.63	¼" -20UNC	⅝" -18UNC	0.50	0.50	1.97	2.76	F05	F07	0.71
GO-24-14MM	14MM	2.40	0.63	¼" -20UNC	⅝" -18UNC	0.50	0.50	1.97	2.76	F05	F07	0.71
GO-30	1.250/1.252	2.00	0.79	⅝" -18UNC	¾" -16UNC	0.50	0.59	2.76	4.02	F07	F10	1.10
GO-50	1.938/1.940	2.05	0.79	½" -13UNC	N/A	0.87	N/A	4.92	N/A	F12	N/A	1.90
GO-80	2.375/2.377	3.86	0.94	⅝" -11UNC	N/A	1.00	N/A	5.51	N/A	F14	N/A	2.38

Performance Table

Operator	Gear Ratio	Mechanical advantage	Weight (lbs.)	Maximum Torque Rating (In-Lbs.)	External Failure Torque (In-Lbs.)	Internal Failure Torque (In-Lbs.)	Output Torque @ 80 Lbs. Rim Pull 6" Handwheel (In-Lbs.)	Output Torque @ 80 Lbs. Rim Pull 10" Handwheel (In-Lbs.)	Output Torque @ 80 Lbs. Rim Pull 12" Handwheel (In-Lbs.)	Output Torque @ 80 Lbs. Rim Pull 18" Handwheel (In-Lbs.)	Output Torque @ 80 Lbs. Rim Pull 24" Handwheel (In-Lbs.)
GO-24	24:01	3.4:1	8.4	2500	3100	5900	816	1360	1632	2448	N/A
GO-30	30:01	5.8:1	18.5	6000	7000	9700	N/A	2320	2784	4176	N/A
GO-50	50:01	10.0:1	18.9	10000	12000	15000	N/A	4000	4800	7200	9600
GO-80	80:01	13.1:1	47.5	18000	19950	24500	N/A	N/A	6380	9576	12770

Gear Operators GO QVA



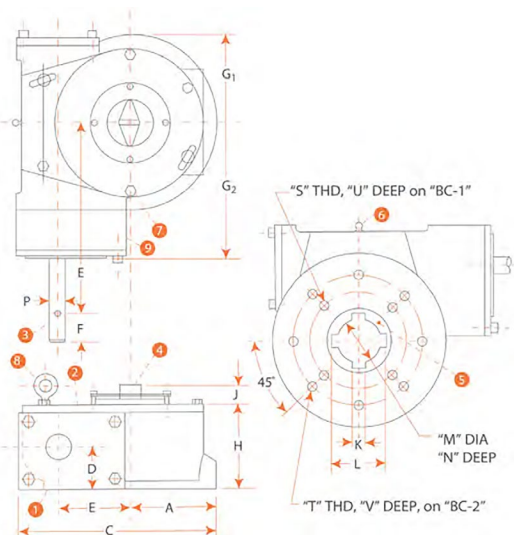
Spur Gear Reduction
Series GO-300
and GO-700

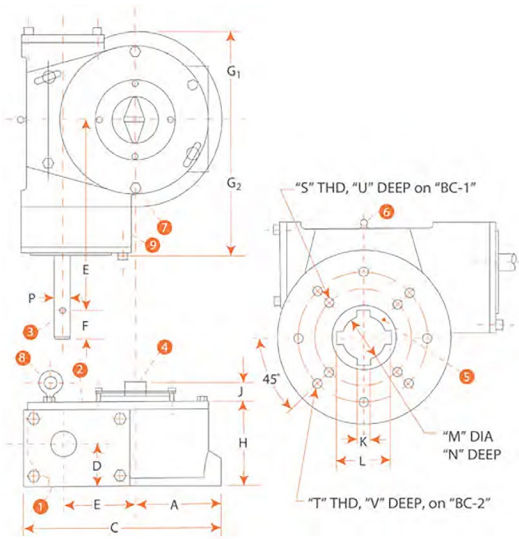
Features

- Spur Gear Reduction Worm Gear Operators with Torque Output from 26,000 to 67,000 In-Lbs.
- ISO Mounting Patterns
- Output Torque Ratings based on 80 Lbs. of Rim Pull per MSS and API Standards
- Sealed Weathertight Housings
- Unique External Lube Fitting and Built-In Grease Relief Valve
- Epoxy Coated Housings
- Standard NAMUR Pattern for Limit Switch Mounting
- Standard Eye-Bolts for Lifting
- Designed to insure that Over-Torque Failure Point is Handwheel Pin, assuring External Failure
- Multiple Drive Inserts Available. See Page 6

Materials of Construction

Part	Qty,	Description	Standard Material
1	1	Body	Cast Iron
2	1	Cover	Cast Iron
3	1	Input Shaft	1045 Steel
4	1	Position Indicator	Cast Iron
5	1	Output Shaft	Ductile Iron
6	1	Grease Fitting	Plated Carbon Steel
7	5	Cover Bolts	Plated Carbon Steel
8	2	Eye Bolts	Plated Carbon Steel
9	1	Spur Gear Housing	Cast Iron
Not Shown	2	Limit Stop Screws	Alloy Steel





Dimensions

Unit	A	B	C	D	E	F	G1	G2	H	J	K	L
GO-300-F14	4.92	4.13	11.42	2.36	11.18	1.50	4.92	7.56	4.2	1.58	.500/.502	2.71
GO-300-F16	4.92	4.13	11.42	2.36	11.18	1.50	4.92	7.56	4.72	1.58	.500/.502	2.71
GO-700	5.91	5.51	13.78	2.76	12.76	1.50	5.91	9.06	5.59	1.58	.750/.753	4.19

Unit	M	N	P DIA	S	T	U	V	BC-1	BC-2	ISO #1	ISO #2	Thru Hole
GO-300-F16	2.375/2.377	4.69	0.94	5/8" -11UNC	N/A	0.94	N/A	5.51	N/A	F14	N/A	2.38
GO-300-F19	2.375/2.377	4.69	0.94	3/4" -10UNC	N/A	1.18	N/A	6.50	N/A	F16	N/A	2.38
GO-700	3.750/3.752	5.60	0.94	3/4" -10UNC	5/8" -11UNC	1.50	0.98	6.50	10.00	F16	F25	3.75

Performance Table

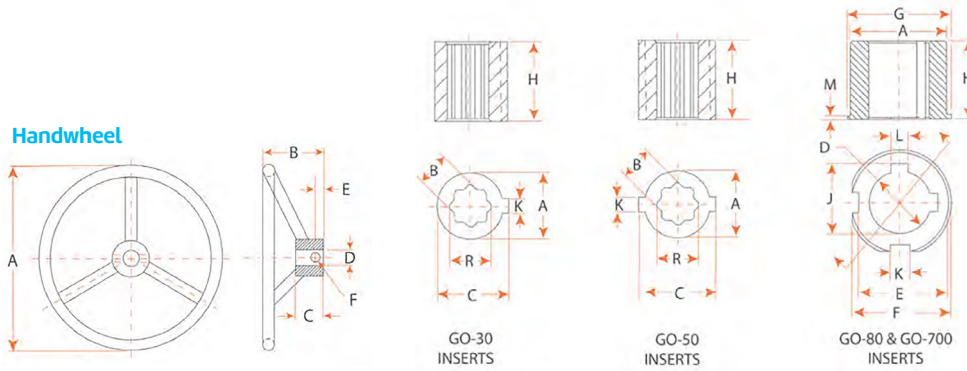
Operator	Gear Ratio	Mechanical advantage	Weight (lbs.)	Maximum Torque Rating (IN-LBS.)	External Failure Torque (IN-LBS.)	Internal Failure Torque (IN-LBS.)	Output Torque @ 80 Lbs. Rim Pull 12" Handwheel (IN-LBS.)	Output Torque @ 80 Lbs. Rim Pull 18" Handwheel (IN-LBS.)	Output Torque @ 80 Lbs. Rim Pull 24" Handwheel (IN-LBS.)	Output Torque @ 80 Lbs. Rim Pull 30" Handwheel (IN-LBS.)	Output Torque @ 80 Lbs. Rim Pull 36" Handwheel (IN-LBS.)
GO-300	290:01	50.0:1	81.4	40,000	50,000	65,000	24,000	26,000	N/A	N/A	N/A
GO-700	320:1	46.7:1	140.8	68,000	70,000	80,000	22,416	33,624	44,832	56,040	67,248

Numbering System How to order GO QVA

G050		F14		27MM		18	
Gear Operator		ISO Pattern		Final Drive		Handwheel	
G024	F05/F07	= G024	Blank	= Keyed Per Dimension Charts (Pgs. 2 & 3)	BS	None	
G030	F07/F10	= G030	11MM	= 11MM Square (G024)	6	= 6" OD (G024)	
G050	F12	= G050	14MM	= 14MM Square (G024)	10	= 10" OD (GO 24 OR 30)	
G080	F14	= G080 OR G0300	17MM	= 17MM Square (G030)	12	= 12" OD (All)	
G0300	F16	= G0300	19MM	= 19MM Square (G030)	18	= 18" OD (All)	
G0700	F16/F25	= G0700	22MM	= 22MM Square (G050)	20	= 20" OD (G080, 300, 700)	
			27MM	= 27MM Square (G050 or 80)	24	= 24" OD (G080 & 700)	
			10MM	DIA = 10MM Thru Hole (G030 or 50)	30	= 30" OD (G0700)	
			25MM	DIA = 25MM Thru Hole (G080, 300, 700)	36	= 36" OD (G0700)	

Gear Operators GO QVA

Handwheel



Insert Dimensions

Insert	For:	A DIA.	B	C	D DIA.	E	F	G DIA.	H	J	K	I	M	R
GO30-10MMDIA	GO-30	1.248/1.244	.39 DIA	1.335	N/A	N/A	N/A	N/A	2	N/A	.187/.185	N/A	N/A	N/A
GO30-17MMSQ	GO-30	1.248/1.244	.669/.674	1.335	N/A	N/A	N/A	N/A	2	N/A	.187/.185	N/A	N/A	0.920
GO30-19MMSQ	GO-30	1.248/1.244	.748/.753	1.335	N/A	N/A	N/A	N/A	2	N/A	.187/.185	N/A	N/A	0.995
GO50-10MMDIA	GO-50	1.936/1.930	.39 DIA	2.276	N/A	N/A	N/A	N/A	2	N/A	.375/.373	N/A	N/A	N/A
GO50-22MMSQ	GO-50	1.936/1.930	.866/.871	2.276	N/A	N/A	N/A	N/A	2	N/A	.375/.373	N/A	N/A	1.120
GO50-27MMSQ	GO-50	1.936/1.930	1.063/1.068	2.276	N/A	N/A	N/A	N/A	2	N/A	.375/.373	N/A	N/A	1.425
GO80-25MMDIA	GO-80 & 300	2.374/2.371	N/A	N/A	0.985	2.156	2.457	2.600	2.95	N/A	.500/.502	N/A	0.16	N/A
GO80-27MMSQ	GO-80 & 300	2.374/2.371	1.063/1.068	N/A	N/A	2.156	2.457	2.600	2.95	N/A	.500/.502	N/A	0.16	1.425
GO80-33DIA	GO-80 & 300	2.374/2.371	N/A	N/A	1.313/1.315	2.156	2.457	2.600	2.95	1.455	.500/.502	.313/.315	0.16	N/A
GO80-38DIA	GO-80 & 300	2.374/2.371	N/A	N/A	1.500/1.502	2.156	2.457	2.600	2.95	1.67	.500/.502	.375/.377	0.16	N/A
GO80-41DIA	GO-80 & 300	2.374/2.371	N/A	N/A	1.625/1.628	2.156	2.457	2.600	2.95	1.796	.500/.502	.375/.377	0.16	N/A
GO700-25MMDIA	GO-700	3.748/3.745	N/A	N/A	0.985	3.462	3.839	4.020	3.15	N/A	.750/.752	N/A	0.16	N/A
GO700-51DIA	GO-700	3.748/3.745	N/A	N/A	2.000/2.003	3.462	3.839	4.020	3.15	2.223	.750/.752	.500/.502	0.16	N/A
GO700-63DIA	GO-700	3.748/3.745	N/A	N/A	2.500/2.503	3.462	3.839	4.020	3.15	2.815	.750/.752	.708/.710	0.16	N/A

Handwheel Dimensions

Part Number	For:	A DIA	B	C	D DIA	E	F	Weight Lbs.
GO24-6	GO-24	6.0	2.5	1.1	0.63	0.32	0.20	3.0
GO24-10	GO-24	10.0	2.9	1.9	0.63	0.40	0.20	6.6
GO24-12	GO-24	12.0	2.9	1.9	0.63	0.40	0.20	7.0
GO24-18	GO-24	18.0	2.2	2.3	0.63	0.79	0.20	7.5
GO30-10	GO-30 & 50	10.0	2.9	1.9	0.79	0.40	0.20	6.6
GO30-12	GO-30 & 50	12.0	2.9	1.9	0.79	0.40	0.20	7.0
GO30-18	GO-30 & 50	18.0	6.2	2.3	0.79	0.79	0.20	7.5
GO80-12	GO-80, 300, 700	12.0	2.9	1.9	0.95	0.4	0.24	7.0
GO80-18	GO-80, 300, 700	18.0	2.2	2.3	0.95	0.79	0.24	7.5
GO80-20	GO-80, 300, 700	20.0	6.7	2.3	0.95	0.79	0.24	8.4
GO80-24	GO-80 & 700	24.0	6.9	2.3	0.95	0.79	0.24	9.7
GO80-30	GO-700	30.0	8.3	2.3	0.95	0.79	0.24	12.3
GO80-36	GO-700	36.0	9.7	2.3	0.95	0.79	0.24	15.8

About ASC Engineered Solutions

ASC Engineered Solutions is defined by quality—in its products, services and support. With more than 1,400 employees, the company's portfolio of precision-engineered piping support, valves and connections provides products to more than 4,000 customers across industries, such as mechanical, industrial, fire protection, oil and gas, and commercial and residential construction. Its portfolio of leading brands includes ABZ Valve®, AFCON®, Anvil®, Anvil EPS, Anvil Services, Basic-PSA, Beck®, Catawissa, Cooplet®, FlexHead®, FPPI®, Gruklok®, J.B. Smith, Merit®, North Alabama Pipe, Quadrant®, SCI®, Sharpe®, SlideLOK®, SPF® and SprinkFLEX®. With headquarters in Commerce, CA, and Exeter, NH, ASC also has ISO 9001:2015 certified production facilities in PA, TN, IL, TX, AL, LA, KS, and RI.



asc-es.com

Building connections that last™

FC-DS-GO QVA-v02 20251107

